

# NORTHWEST AREA

**1 Anchor Inn Resort**  
5596 County Road 4, Spring Lake

- Direct Trail Access
- World-Class Hunting & Fishing
- Legendary Hospitality
- On/Off Sale
- Open Daily

218-659-2718 • anchorinnresort.com

**4 White Oak Inn and Suites & OutPost Bar and Grill**

- Trail Outside the Door Go Anywhere
- One Stop for All Your Dining Needs
- Jacuzzi Suites • Pool & Hot Tub
- Meeting Room

Stay and Play at White Oak Inn and Suites and the OutPost Bar and Grill

877-633-5504  
218-246-9868 • 218-246-9400

**7 RILEY'S CANNIBAL JUNCTION**

- Full service bar & restaurant
- Off Sale • Pull Tabs • ATM
- Weekly Specials • Great Food

46551 Riley Road, Deer River  
Facebook.com/rileyscannibaljunction (218) 832-3656

**2 HOLLER**  
Junction of Hwy 46 & City Rd 13  
Directly across from Northwoods Campground  
On ATV/Snowmobile Trail

- 22 Pulltab Boxes/Electronic
- Every Other Sunday Bingo
- On Sale/Off Sale
- Pizza/Snacks

Alvwood, MN 218-659-9225

**5 Max Mini Store**

24 Hour Pay at the Pump  
50758 State Hwy 46 Squaw Lake, Junction Co. Rd. 4

- Gas - On & Off Road Diesel - Oil - Interstate Batteries
- Hardware - ATM - Grocery - Deli Express - Ice
- Propane Exchange

(218) 659-4235  
M-F 6am-9pm • Sun 7am-9pm



**NORTHOME WELCOMES YOU!**

- MEAT RAFFLES every other Friday
- MN Twins games
- Pizza and Snacks
- Pull Tabs
- Parking in back
- 24/7 LAUNDRY

City of Northome  
218-897-9501

**6 FISH TAILS Bar & Grill**

Monday - Sunday Open at 11 am  
PULL TABS • ON-OFF SALE  
BIGGEST BEER SELECTION IN THE AREA!

Squaw Lake, MN fishetailsbarandgrill.com 218-659-4488

**8 LAKESIDE LUMBER & HARDWARE**  
Marcell, MN  
218-632-3300

www.lakesidemarcell.com

**11 TIMBER WOLF INN**  
PREMIER NORTHWOODS DINING DESTINATION

Open daily! Check our Facebook or call 218-832-3990 for hours and reservations.

Lodging | Bar | Restaurant  
Quality Homemade Food  
Gluten Free Menu  
Handcrafted Cocktails  
Off Sale | Pull Tabs | ATM

**14 Trailside Restaurant**  
29314 County Rd. 52, Bigfork  
218-245-0213  
Fuel Now Available

**17 Bigfork Valley**  
Offering a wide-range of services:  
Emergency Room • ENT • Laboratory  
Surgical Rooms • Cardiac Rehab • Long Term Care  
Rehabilitation • Physical Therapy • Assisted Living  
Dentistry • Chiropractic • Massage/Therapy • Pharmacy

Where skill meets compassion

**18 EFFIE COUNTRY SERVICE**  
Gas/Diesel • Oil/Lubricants • Beverages & Fresh Food  
Off Sale Liquor • 24 Hour Towing

18 Located at the intersection of Highways 38 & 1  
218-743-3616 • Open 365 Days  
M-S 6 am-9 pm • Sun 6 am-8 pm

**15 NORTH ITASCA ELECTRIC**  
OWNED BY THOSE WE SERVE  
As you ride Itasca ATV and snowmobile trails, be safe. Please watch for cooperative equipment.

301 Main Ave. Bigfork, MN  
218-743-3131 or 800-762-4048  
www.northitascaelectric.com

**Owen's Place RV PARK**  
In The Heart Of The Chippewa National Forest

48748 Hwy. 38, Marcell

20 Daily • Weekly • Montly • Yearly  
Full Hookups • Sewer • Water • Electric  
32 Sites • 2,000 Square Feet Per Site  
218-398-3219 or 307-331-2277  
www.owensplacervpark.com

**21 DELUXE ROOMS**  
AMAZING HOSPITALITY  
IM HOTEL

Complimentary Hot Breakfast  
Large Pool & Whirlpool  
Conveniently Located

**AmericInn**  
BY WYNDHAM

(218)326-8999 • Americinn.com  
1812 S Pokegama Ave, Grand Rapids, MN

**23 RIDE THE TRAILS & RELAX AT TIMBERLAKE**

EXPLORING THE ATV TRAILS AROUND GRAND RAPIDS? MAKE TIMBERLAKE LODGE YOUR TRAIL HEADQUARTERS. AFTER A DAY OF RIDING, ENJOY COMFORTABLE LODGING, A FULL-SERVICE RESTAURANT, AND AN INDOOR POOL AND HOT TUB - EVERYTHING YOU NEED TO RECHARGE FOR TOMORROW'S RIDE.

BOOK TODAY  
218-326-3600  
TIMBERLAKELODGEHOTEL.COM

**9 FRONTIER SPORTS**  
Marcell, MN

- Pizza • Subs • Groceries
- Non-oxy 91 • Bait • Tackle
- Ammo • Docks • Gifts
- Clothing • Beer • Wine • Liquor

Open 6am-8pm  
Monday-Thursday 6am-9pm  
Friday & Saturday 7am-7pm Sunday

218-832-3901  
frontiersportsmarcell@gmail.com

**12 Golf On The Edge**  
Bigfork, MN

218-743-3626  
golfontheedge.com  
59851 Co. Rd. 261, Bigfork  
Next to ATV Trails

**BAR & RESTAURANT OPEN YEAR ROUND!!**  
Daily Drink & Food Specials  
9 Hole Regulation Course | 350 yd Driving Range  
Chip & Putt Practice Greens  
Ample Trailer Parking

**13 NORTH STAR LAKE RESORT**  
Chow Hall

We are open 7 days a week in the Summer.  
Full Bar. Great view off our deck.  
17 air conditioned cabins available for rent.  
Heated pool and beautiful beach.  
218-832-3131 • www.northstarlakeresort.com

**16 Loon Point Resort**

51829 County Road 310  
Bigfork, MN 55026  
Phone 218-245-1470  
loonpointresort@gmail.com  
www.loonpointresortmn.com

- Full Log Cabins with king beds
- Direct access to ATV trails & forest roads
- Trailer parking, Spring Discount Rates
- On private Wasson Lake. Boat Rentals
- Ride directly to multiple bars/restaurants
- Over 200 miles of trails & roads to explore

**Hayslips Corner**  
"Oldest Bar in MN"  
218-832-3516

10 On 4-Wheeler & Snowmobile Trails  
Monday-Saturday 11am - Close  
Sunday Noon - Close

**LIGHTS: Turn your lights on for safety and obey the law. If your ATV is equipped with a headlight and tail light, they must be on at all times when operating the ATV.**

# NORTHEAST AREA

**24 ANTLER LAKE STORE & MOTEL**

24 Hour Fuel • Convenience Store • Liquor Store  
12 Unit Motel - Reservations 218-245-2369  
Open Sun-Thurs 7 am-8 pm Fri, & Sat 7 am-9 pm

**25 ANTLER LODGE**  
Ye Olde Eatery & Saloon • Tuesday-Sunday 11am-9pm  
YOUR ONE STOP VACATION SPOT LOCATED DIRECTLY ON TRAIL  
218-245-1136  
Scenic Highway 7, 35 Miles North of Grand Rapids

**28 TMJ'S LODGE & RESORT**  
Make MJ's your #1 wheeler destination, located on beautiful Swan Lake, we offer a full bar and restaurant, beach, playground, volleyball, outside dining, cabin rentals & bonfires.

April-May - Wed. & Thurs. 4-11 • Fri.-Sun. Noon-11  
Summer Hours Start June 1 - Wed.-Sun. Noon-11  
28179 East Shore Drive, Pengilly, MN  
218-885-1093

**26 THE LOCKER ROOM**  
Enjoy Great Food & Live Music at Our Bar and Grill!  
Just off the Snowmobile Trail!

(218) 245-3976  
Dine In, Carry Out, Delivery  
403 Roosevelt Ave Coleraine, MN 55722



**27 WIZARD'S**  
Full Menu • On/Off Sale  
Open Everyday 8am-1am  
Breakfast • Lunch • Dinner

102 Central Avenue, Nashauk, MN • 218-885-3080

**For Lodging Information**

Edge of the Wilderness Resort Area  
www.edgeofthewilderness.com

Visit GRAND RAPIDS MINNESOTA



Thank you to the many supporters, volunteers, and contributors who have made Itasca County's ATV Trails what they are. We value the continued support from our businesses, residents, and visitors of Itasca County. A HUGE thank you to the local ATV Clubs and the Minnesota Grant-In-Aid Trail Assistance Program for maintaining and signing these trails. Your dedication and hard work is greatly appreciated!

YAMAHA OUTDOOR ACCESS INITIATIVE POLARIS

**GRANT-IN-AID TRAIL**

A Cooperative Project For Outdoor Recreation

Trail User Organizations  
Local Unit of Government  
Minnesota Department of Natural Resources

**DIRT ALERT**  
IT DEPENDS ON YOU!  
RESPECT is the Key to Keeping Your Privilege to Ride on Public Land.

RESPECT FOR THE ENVIRONMENT

- Stay on designated trails and avoid sensitive areas.
- Remove your tracks and tires.

RESPECT FOR OTHERS

- Do not block trail gates, gates, or other meeting places.
- Keep your machine quiet. Use only "more ground" mode in the woods.
- Do not use headlights or sirens.
- Do not use horns or sirens.
- Do not use horns or sirens.
- Do not use horns or sirens.

RESPECT FOR YOURSELF

- Use proper riding technique.
- Do not drink and ride.
- Do not drink and ride.
- Do not drink and ride.

RESPECT FOR PROPERTY

- Do not trespass on private property.
- Do not trespass on private property.
- Do not trespass on private property.

RESPECT FOR AUTHORITY

- Obey all posted signs and all laws.
- Obey all posted signs and all laws.
- Obey all posted signs and all laws.

Amateur Riders Motorcycle Association  
Motorcycle Industry Council  
All Terrain Vehicle Association of Minnesota  
Minnesota Department of Natural Resources

**YOUR FEEDBACK NEEDED!**  
Help shape the future of Itasca County trails.

The Itasca County Land Department, in partnership with the University of Minnesota and The PLUM Catalyst, is leading a two-year comprehensive trails study (Dec 2025 - Nov 2027).

We're gathering input from residents and visitors to better understand how our trail systems are used and the economic impact they create - information that will guide maintenance, funding, and future trail development.

Take Survey

Thank you for your participation!

**ENCOUNTERING AN ACTIVE LOGGING OPERATION NEAR A TRAIL...**

EQUIPMENT OPERATORS' MAY NOT SEE OR HEAR YOU, EVEN IF YOU CAN SEE OR HEAR THEM.

- Use CAUTION around logging activity near the trail.
- Stay back a minimum of 200 feet from any logging equipment.
- Use any re-routes established and comply with posted signs.
- Watch for logging trucks hauling.
- Stay on trail; DO NOT approach any of the equipment.

Itasca County Land Department • 1177 LaPrairie Avenue • Grand Rapids, MN 55744 • 218-327-2855

**SALES, SERVICE, PARTS & APPAREL**  
RAYSSPORTANDCYCLE.COM

29

**Ray's SPORT & CYCLE**

20890 HWY 169 GRAND RAPIDS, MN  
218.326.9355

# GRAND RAPIDS AREA

**30 grandItasca**  
Clinic & Hospital  
Parts of Fairview Health Services

**RAPID CLINIC** - Open 7 days/week  
Monday - Friday: 9:00 AM - 7:00 PM  
Saturday & Sunday: 9:00 AM - 5:00 PM

**EMERGENCY DEPARTMENT** - Available 24/7

1601 Golf Course Road | Grand Rapids, MN 55744  
www.granditasca.org | 218-326-3401

**34 Grand Rapids Area Chamber of Commerce**

"A Vibrant and Thriving Greater Grand Rapids Area."  
Fostering a business environment for growth by connecting, advocating, and educating.

Phone: 218-326-6619  
Address: One NW Third Street, Grand Rapids, Minnesota 55744  
Current President: April Aranson

**31 WILDWOOD RESORT**  
www.wildwoodresort.net  
218-328-5858

- Beautiful, lakeside cabins with full amenities
- Close to Grand Rapids for shopping, dining and attractions
- Spring & Fall stay 3 nights and get 4th night FREE!

**35 MIDWAY REPAIR**  
25559 US HWY 2, GRAND RAPIDS, MN 55744  
218-327-3335

We repair all makes & models of ATVs

**32 MCCARROLL OFFROAD**  
PARTS - SERVICE - ACCESSORIES  
MACHINE SALES - SERVICE - ACCESSORIES  
OIL CHANGES - WHEELS & TIRES  
ENGINE REBUILDS - TRACKS

PHONE: 218-999-7550



**33 BURGER KING**  
Open at 6:00 am  
Sundays 7 am

**EGG-NORMOUS BURRITO**  
Before a day of ATVs, stop into Burger King for breakfast!

# SOUTH/SOUTHEAST AREA

**36 TAKE YOUR ATV TO THE Z**

Open Daily • 11 A.M.  
Zorbaz.com • 218.326.1006

**ZORBZ**  
POKEGAMA LAKE

**39 BLACKBERRY JUNCTION**  
Opens at 11 Thurs, Fri, Sat, Sun

218-999-5009  
Hwy 2 & Dove Lane, Blackberry MN  
Full Bar, Pizza, Fresh Cut Fries, Appetizers and our Signature Burger Smashers!

**37 POKEGAMA LAKE STORE**  
(218)326-9390

Non Oxy Gas/Gas  
Convenience Store  
Beer/Liquor • Bait

2 blocks south of Pokegama Lake on Hwy 169  
Open 7 Days A Week  
6 AM - 9 PM 7 Days A Week

**40 DON'T FORGET SNACKS FOR THE TRAIL**

**HOME OF FRED'S**  
SINCE 1964  
COUNTRY STYLE  
SMOKED MEATS  
GOODLAND, MN

218-492-4477

- BEEF STICKS
- JERKY
- SAUSAGES
- GAS
- BEVERAGES

**38 SWAN RIVER RED EYE SALOON & EATERY**  
218-492-4512  
HWY 65 & HWY 2, SWAN RIVER, MN  
Opens at 11 AM 6 Days A Week  
Full Menu • Drinks • ATM • Off Sale Liquor Store



# FREQUENTLY ASKED QUESTIONS

**Question:** I'm a Minnesota resident and my ATV is registered in Wisconsin. Do I need the nonresident trail pass?  
**Answer:** No, residents do not need this trail pass even if their vehicle is registered in a different state.

**Question:** Can I drive my ATV on the side of a road?  
**Answer:** It depends on the type of ATV you are driving, the type of road you are on, and the age of the operator.

**Question:** Can I operate an OHM in the ditches?  
**Answer:** No, OHMs cannot be operated in ditches unless on a trail designated for that specific vehicle type.

**Question:** Can I ride my ATV or OHM on a snowmobile trail?  
**Answer:** No, most snowmobile trails cross lands because of a special permit that only allows public use during the winter season by snowmobiles. Any other use may be considered trespassing.

**Question:** Can I operate my ATV on snowmobile trails in the winter if there's no snow?  
**Answer:** No, in most cases snowmobile trails cross private lands by permit and are not open to ATVs or other uses. Any other use except snowmobile riding would be trespassing. Exception: Trails and roads on state forest lands remain open to public use until groomed unless signed "Closed."

**Question:** Where can I ride my Class 1 ATV?  
**Answer:** Several trails or parts of trails are for Class 1 ATVs only. For a list of trails for Class 1 ATVs, Class 2 ATVs, OHMs and ORVs, see the riding opportunities at www.mndnr.gov/ohv.

**Question:** Where can I ride my ATV if I put tracks on it?  
**Answer:** Once you put tracks on an ATV it is considered an ORV. You can dual register it as an ORV and an ATV. See ORV General Operations on

©2026 State of Minnesota, Department of Natural Resources www.dnr.state.mn.us

# GRAND RAPIDS MINNESOTA

**2026 ITASCA COUNTY ATV MAP**

**ATV FRIENDLY PLACES TO STAY**

Americinn by Wyndham (22)	Jessie View Resort (62)
Balsam Lake Cabin (41)	Lake Loft (63)
Bear's Den (42)	Little Buck Camp (64)
Best Western Plus (43)	Lone Star Lodge (65)
Birch Bay Resort (44)	Long Lake Dome (66)
Campfire Cottage (45)	Long Lake Lookout (67)
Moonlight Cottage (45A)	Loon Point Resort (16)
Sunset Cottage (45B)	Loon's Landing (68)
Camp Hiwatha (46)	Malbay Estates (69)
Country Inn & Suites by Radisson (47)	Mallard Point (70)
Doc House (48)	Mid Mod Lake House (71)
Downtown Chamer (49)	Moose Point Look Out (72)
Dudley Cottage (50)	My Place Hotel (73)
Eagle Lake Retreat House (51)	Northland Wonderland (74)
Eagle View Lodge (52)	Pokegama Lake Resort (75)
First Avenue Suite (53)	Rising Eagle Resort (76)
Forest Lake Lodge (54)	Timberlake Lodge (23)
Forest Lake Motel (55)	Toga Basecamp (77)
Hatch Lake Tiny Home (56)	Trout Lake Campground (78)
Historic Gilbert Mansion (57)	Turtle Lake Beach House (79)
Hideaway on Little Jay (58)	Twin Lakes Retreat (80)
Hotel Rapids (59)	Two Rivers RV Park & Campground (81)
IM Hotel (21)	West Pines Motel (82)
Itasca Trails Campground (60)	White Pine Lake Home (83)
Itasca Motel (61)	Wildwood Resort (31)

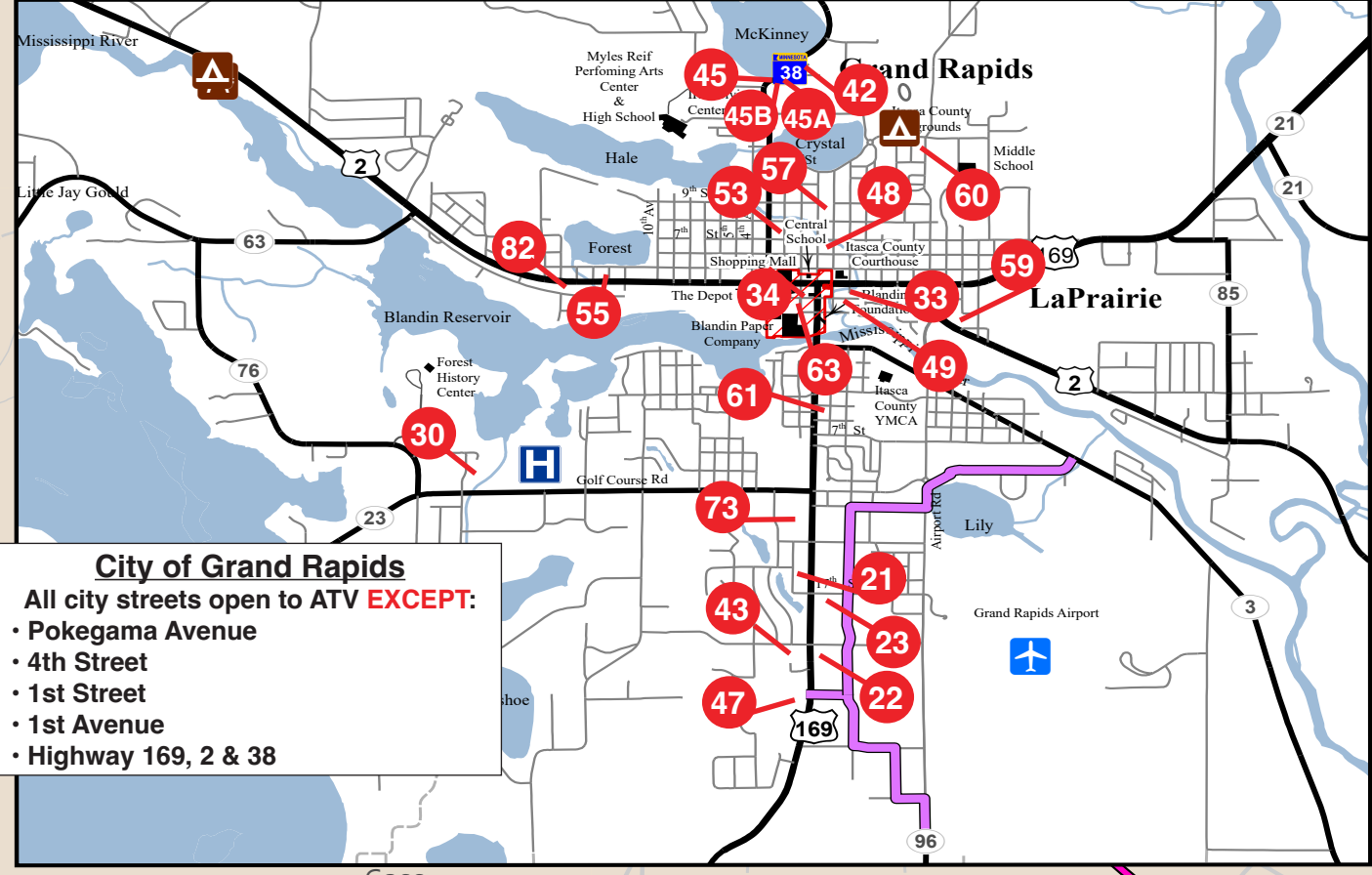
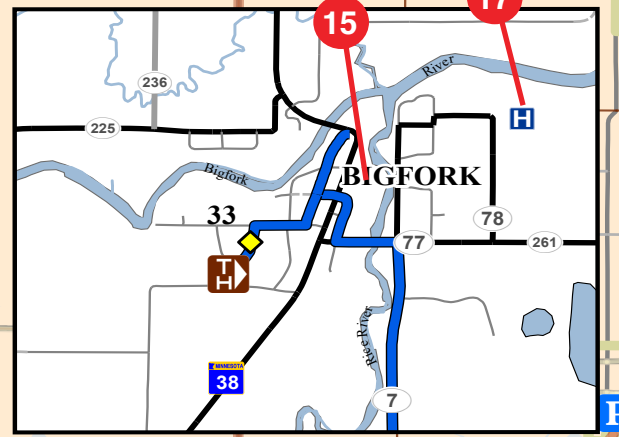
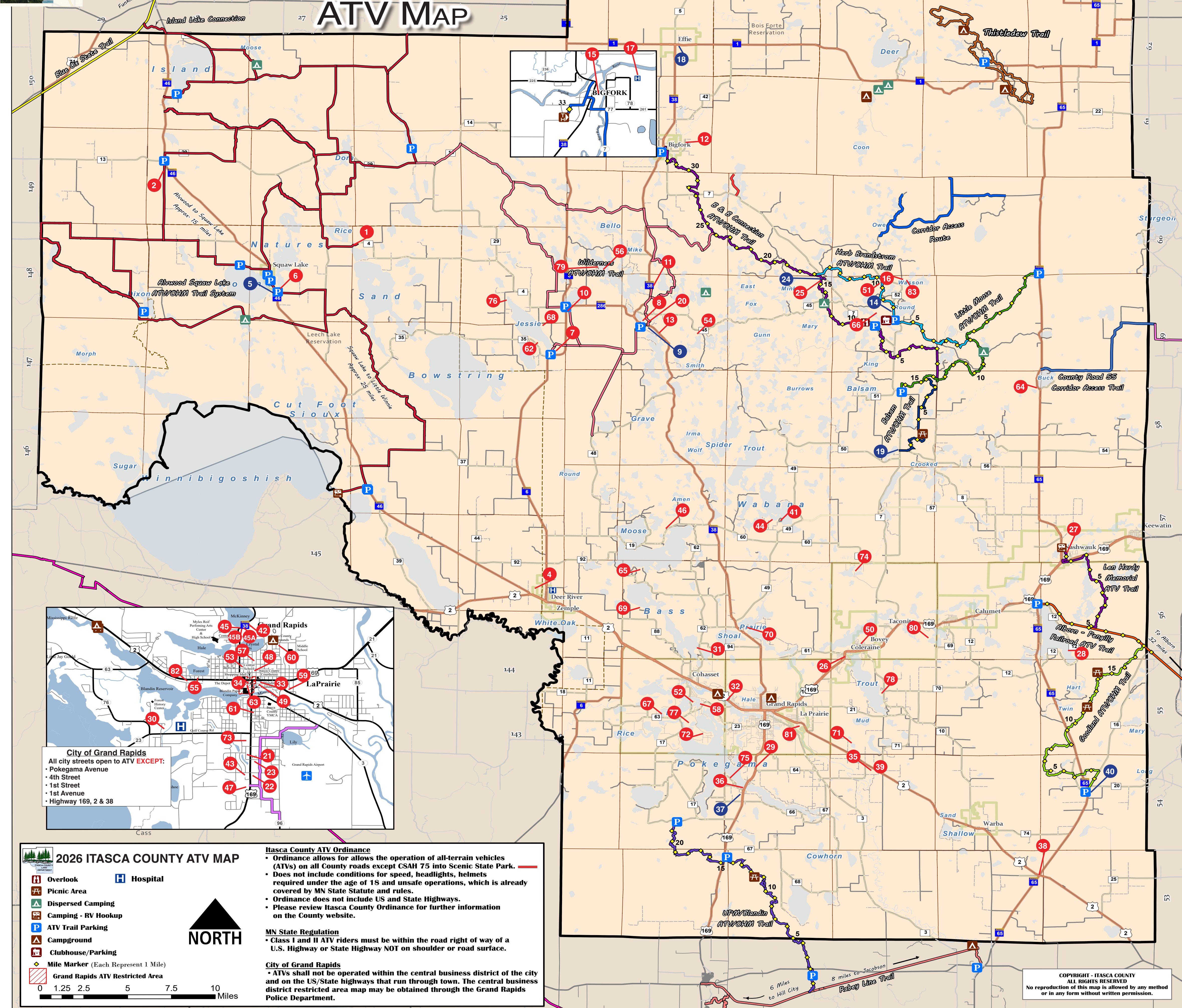
Book Your Lodging:  
www.visitgrandrapids.com/stay

**GRAND RAPIDS MINNESOTA**  
EDGE OF THE WILDERNESS

WWW.VISITGRANDRAPIDS.COM  
WWW.EDGEOFTHIEWILDERNESS.COM



# ITASCA COUNTY ATV MAP



**City of Grand Rapids**  
All city streets open to ATV EXCEPT:  
 • Pokegama Avenue  
 • 4th Street  
 • 1st Street  
 • 1st Avenue  
 • Highway 169, 2 & 38

**2026 ITASCA COUNTY ATV MAP**

- Overlook
- Hospital
- Picnic Area
- Dispersed Camping
- Camping - RV Hookup
- ATV Trail Parking
- Campground
- Clubhouse/Parking
- Mile Marker (Each Represent 1 Mile)
- Grand Rapids ATV Restricted Area

**NORTH**

0 1.25 2.5 5 7.5 10 Miles

**Itasca County ATV Ordinance**

- Ordinance allows for the operation of all-terrain vehicles (ATVs) on all County roads except CSAH 75 into Scenic State Park.
- Does not include conditions for speed, headlights, helmets required under the age of 18 and unsafe operations, which is already covered by MN State Statute and rules.
- Ordinance does not include US and State Highways.
- Please review Itasca County Ordinance for further information on the County website.

**MN State Regulation**

- Class I and II ATV riders must be within the road right of way of a U.S. Highway or State Highway NOT on shoulder or road surface.

**City of Grand Rapids**

- ATVs shall not be operated within the central business district of the city and on the US/State highways that run through town. The central business district restricted area map may be obtained through the Grand Rapids Police Department.

**COPYRIGHT - ITASCA COUNTY**  
ALL RIGHTS RESERVED  
No reproduction of this map is allowed by any method or in any form without written permission.

- Alborn - Pengilly Railroad ATV Trail**  
Range Riders ATV Club  
Angie Ketola: 763-548-4264  
Trail Miles: 39 (17 miles managed by Range Riders)  
Open to:   
Opens: April 1st • Closes: November 30th  
Difficulty Level: Easiest
- Alwood - Squaw Lake ATV/OHM Trail**  
Alwood Squaw Lake ATV Club  
Garrett Ous: 218-340-7775  
Trail Miles: 159  
Open to:   
Opens: May 2nd • Closes: March 15th  
Difficulty Level: Easiest
- B & B Connection ATV/OHM Trail**  
Wilderness Wheelers ATV Club  
<https://www.wildernesswheelers.com/>  
Archie Wass: 218-341-8522  
Trail Miles: 33  
Open to:   
Opens: May 15th • Closes: November 1st  
Difficulty Level: Easiest to Moderate
- Balsam ATV/OHM Trail**  
Balsam Trailblazers ATV Club  
Clubhouse/Parking located off Co Rd 52  
Kevin Koetz: 218-259-4105  
Trail Miles: 9  
Open to:   
Opens: May 15th • Closes: November 1st  
Difficulty Level: Easiest
- Blue Ox Trail**  
4 sections maintained by:  
1. The start of the trail to Funkley:  
Timber Riders ATV  
Tim Foss: 320-296-2266  
2. Funkley to Big Falls:  
Northome Ridge Runners Snowmobile/ATV Club  
Jack White: 218-897-5764  
3. Big Falls to south of Littlefork:  
DNR Parks and Trails - Grand Rapids  
Area Supervisor: 218-328-8984  
4. North of Littlefork to International Falls:  
DNR Parks and Trails - Tower  
Area Supervisor: Joe Majerus: 218-300-7841  
Trail Miles: 74  
(23 miles in Beltrami, 11 miles in Itasca, and 40 miles in Koochiching Counties)  
Open to: and portions to   
Opens: Funkley North: April 1st, Funkley South: May 1st  
Closes: Funkley North: November 30th, Funkley South: November 1st  
Difficulty Level: Easiest
- County Road 55 Corridor Access Trail (connects to Chisholm Trail)**  
Northern Traxx ATV Club  
Larry Folstad: 218-969-6789  
Trail Miles: 9  
Open to:   
Opens: Year Round  
Difficulty Level: Easiest
- Herb Brandsstrom ATV/OHM Trail**  
Swampiders Snowmobile/ATV Club  
Clubhouse/Parking located off Co Rd 52  
Kevin Koetz: 218-259-4105  
Trail Miles: 15  
Open to:   
Opens: May 15th • Closes: November 1st  
Difficulty Level: Easiest
- Island Lake Connection Trail**  
Northome Ridge Runners ATV Club  
<https://www.northomeridgerunners.com/>  
Jack White: 218-897-5764  
Trail Miles: 2  
Open to:   
Opens: May 2nd • Closes: December 1st  
Difficulty Level: Easiest
- Len Hardy Memorial ATV Trail**  
Range Riders ATV Club  
Angie Ketola: 763-548-4264  
Trail Miles: 9  
Open to:   
Opens: May 15th • Closes: November 1st  
Difficulty Level: Easiest
- Little Moose ATV/OHM Trail**  
Balsam Trailblazers ATV Club  
Clubhouse/Parking located off Co Rd 52  
Kevin Koetz: 218-259-4105  
Trail Miles: 18  
Open to:   
Opens: May 15th • Closes: November 1st  
Difficulty Level: Easiest
- Northwoods Regional ATV/OHM Trail System:**  
-Goodland ATV/OHM Trail  
Itasca Trail Riders ATV Club  
Jon Korpi: 218-969-4297  
Trail Miles: 19  
Open to:   
Opens: May 15th • Closes: November 1st  
Difficulty Level: Easiest
- Rabey Line and Hill City Connector**  
Northwoods Quads ATV Club  
Harlan Kingsley  
Trail Miles: 19  
Open to:   
Opens: May 15th • Closes: November 1st  
Difficulty Level: Easiest
- JPM - Blandin ATV/OHM Trail**  
Rapids Riders ATV Club  
<http://www.ratv.org/>  
Jerry McKnight: 218-259-6115  
Trail Miles: 21  
Open to:   
Opens: May 15th • Closes: November 1st  
Difficulty Level: Easiest
- Thistledeew ATV Trail**  
MN DNR Parks and Trails Office  
<https://www.dnr.state.mn.us/ohv/index.html>  
Area Supervisor  
218-328-8984  
Trail Miles: 25 (Shared with horses)  
Open to:   
Opens: April 1st • Closes: November 30th  
Difficulty Level: Easiest
- Wilderness ATV/OHM Trail**  
Wilderness Wheelers ATV Club  
<http://www.wildernesswheelers.com/>  
Archie Wass: 218-341-8522  
Trail Miles: 61  
Open to:   
Opens: May 15th • Closes: November 1st  
Difficulty Level: Easiest

- |                             |                           |                            |                              |  |                        |
|-----------------------------|---------------------------|----------------------------|------------------------------|--|------------------------|
| 1 Anchor Inn Resort         | 8 Lakeside Lumber         | 15 North Itasca Electric   | 22 Americlnn                 | 29 Rays's Sport & Cycle                  | 36 Zorbaz              |
| 2 Hoot 'N Holler            | 9 Frontier Sports         | 16 Loon Point Resort       | 23 TimberLake Lodge          | 30 Grand Itasca                          | 37 Pokegama Lake Store |
| 3 Northome Municipal        | 10 Hayslips Corner        | 17 Bigfork Valley Hospital | 24 Antler Lake Store & Motel | 31 Wildwood Resort                       | 38 Swan River Red Eye  |
| 4 White Oak Inn & Suites    | 11 Timberwolf Inn         | 18 Effie Country Service   | 25 Antler Lodge              | 32 McCarroll Off Road                    | 39 Blackberry Junction |
| 5 Max Mini Store            | 12 Golf On the Edge       | 19 Balsam Store            | 26 Locker Room               | 33 Burger King                           | 40 Fred's              |
| 6 Fish Tales Bar & Grill    | 13 North Star Lake Resort | 20 Owen's Place RV Park    | 27 Wizards                   | 34 Grand Rapids Area Chamber of Commerce |                        |
| 7 Riley's Cannibal Junction | 14 Trailside Restaurant   | 21 IM Hotel                | 28 MJ's Lodge & Resort       | 35 Midway Repair                         |                        |

