


**LIGHTS:** Turn your lights on for safety and obey the law. If your ATV is equipped with a headlight and taillight, they must be on at all times when operating the ATV.

**6**

**FISH TALES**



**Bar & Grill**

**Monday - Sunday Open at 11 am**

**PULL TABS • ON-OFF SALE**

**BIGGEST BEER SELECTION IN THE AREA!**

Squaw Lake, MN      [fishtalesbarandgrill.com](http://fishtalesbarandgrill.com)      218-659-4488

A line of several blue and black ATVs parked on a dirt path in a wooded area. The ATVs are parked in a row, facing away from the camera. The background is a dense forest of green trees. The image is framed by a thick orange border.

**218-832-3516**  
43867 MN 286  
**Talmoon**

**12**

THE INFAMOUS  
**HAYSLIPS CORNER**  
"OLDEST BAR"  
IN THE STATE OF MINNESOTA

**21 BOWSTRING STORE**  
Gas, Groceries, Hardware, Bait & Tackle  
46023 State Hwy 6 Bowstring | 218-832-3123

*your comfort* is our business!

25

IM  
HOTEL

Newly renovated  
Spacious parking  
Complimentary hot breakfast

(218) 327-1108 | [www.imhoteltimberlake.com](http://www.imhoteltimberlake.com)  
1702 Pokegama Ave S, Grand Rapids, MN

## NORTH AREA

# NORTHEAST AREA

**30 Swan Lake Marathon**  
Gas - Groceries - ATM  
Highway 65 Pengilly, MN  
• 218-885-3806

**30 Years • Established 1993**  
**K-M CORNER STORE**  
3 miles N on Hwy 65

**34**

**Bait-Tackle-Licenses-Bottle Shop-Pull Tabs Lottery-Deli Meats, Cheese-  
Trays & Sandwiches to Order- Propane Filled on site-Full Service Gas**  
-Like us on  **KMCornerStoreMN-**  
**Mon-Fri 6-10 Sat-Sun 7-10 | 218-885-2472**

**LAWRENCE LAKE LIQUOR**  
On/Off Sale Liquor • Frozen Pizza • Event Room  
S-Th 2 pm-10 pm, Fri & Sat 2 pm-Midnight  
**FREE TRAILER PARKING AVAILABLE**  
SCENIC HIGHWAY 7, BOVEY • 245-2367

# DIRT ALERT


THAT  
OR THIS?


**IT DEPENDS ON YOU!**

**RESPECT** is the Key to Keeping Your Privilege to Ride on Public Land.

**RESPECT FOR THE ENVIRONMENT**

- Stay on established trails
- Minimize noise, avoid excessive activities in sensitive areas.
- Don't smoke or drink alcohol while riding

**RESPECT FOR OTHERS**

- Be courteous to all trail users - slow down or stop when meeting others.
- Keep your equipment quiet. Stop sound when ground - noise is the enemy.
- Be safe & responsible - don't drink and ride.
- Don't contribute to overcrowding by riding off-trail.
- Know your limits - if you're unsure, ask a ranger or staff member to educate you.
- Be fair when it comes to resource use.
- Practice good group etiquette - no smoking - campgrounds are family-friendly & pet friendly.

**RESPECT FOR YOURSELF**

- Wear your seat belt & helmet at all times
- Always wear protective gear - helmet, knee pads, gloves, etc.
- Don't drink and ride - even one beer can impair your ability to operate a motor vehicle safely
- Don't drink and ride - even one beer can impair your ability to operate a motor vehicle safely
- Don't drink and ride - even one beer can impair your ability to operate a motor vehicle safely

**RESPECT FOR PROPERTY**

- Obey all posted control and no trespassing signs.
- Respect your riding area and its private resources.

**RESPECT FOR AUTHORITY**

- Obey all posted control and no trespassing signs.
- Know your riding area and its private resources.

**Amateur Riders Motorcycle Association**  
**Motorcycle Industry Council**  
 All Terrain Vehicle Association of Minnesota  
 Minnesota Department of Natural Resources

# WHAT YOU SHOULD DO IF YOU ENCOUNTER AN ACTIVE LOGGING OPERATION ON A TRAIL...

- Use **CAUTION** around logging activity near the trail
- Stay back a minimum of 200 feet from any logging equipment
- Use any re-routes established
- Watch for Logging trucks hauling
- Comply with signs posted; they protect you and the operation
- Stay on trail; **DO NOT** approach any of the equipment

**YOU CAN SEE AND HEAR THEM, BUT THE  
OPERATOR MAY NOT SEE OR HEAR YOU!**



**Itasca County Land Department - 1177 LaPrairie Avenue -  
Grand Rapids, MN 55744 - 218-327-2855**



39

**Ray's**  
SPORT & CYCLE

www.raysportandcycle.com

PARTS  
APPAREL  
SALES  
SERVICE

GET OUT AND RIDE WITH  
RAY'S SPORT & CYCLE

**POLARIS** can-am

 **YAMAHA**  
Racer • gear • fuel

 **HONDA**  
RACING

20890 US HIGHWAY 169 • GRAND RAPIDS, MN 55744  
(218) 326-9355  
MON - FRI 9:00 A.M. - 5:30 P.M.  
SAT 9:00 A.M. - 3:00 P.M.  
SUN - CLOSED

# GRAND RAPIDS AREA

**43 MIDWAY REPAIR**  
25559 US HWY 2 Grand Rapids, MN 55744  
218-327-3335  We repair all makes  
& models of ATVs

## SOUTH AREA

**(218)326-9390**

**Pokegama Lake Store**

**Non Oxy Gas/Gas  
Convenience Store  
Beer/Liquor • Bait**

**2 blocks south of Pokegama Lake on Hwy 169**

*Open 7 days a Week*

**Summer Hours: 6 AM - 10 PM Mon.-Sun.  
Winter Hours: 6 AM - 9 PM 7 Days a Week**

GrandRapids

**Herald** *and* **Review**

**Manney's**

---

*Your* **LOCAL** *Connection*

- NEWS
- EVENTS
- SPORTS
- ADVERTISING

**IN PRINT,  
ON-LINE  
& MOBILE!**

*For more information contact us at*

**218-326-6623**

**[www.grandrapidsmn.net](http://www.grandrapidsmn.net)**

## FREQUENTLY ASKED QUESTIONS

**Question:** Where can I ride my ATV if I put tracks on it?

**Answer:** Once you put tracks on an ATV it is considered an ORV. You can dual register it as an ORV and an ATV. See ORV General Operations on

A photograph of a person wearing a helmet and a plaid shirt riding a black ATV on a dirt trail through a forest. Another ATV is visible in the background. The scene is set in a wooded area with tall trees and green foliage. The ATV has a license plate that reads "375".

**REMINDER:**  
Itasca County has adopted an ordinance that allows the operation of all terrain vehicles (ATVs) on all county roads, with the exception of CSAH 75 into Scenic State Park.

A photograph of a person wearing a helmet and a plaid shirt riding a black ATV on a dirt trail through a forest. Another ATV is visible in the background. The scene is set in a wooded area with tall trees and green foliage. The ATV has a license plate that reads "375".



ITASCA COUNTY LAND DEPARTMENT WOULD LIKE TO REMIND VISITORS AND RESIDENTS THAT MOST OF ITASCA COUNTY ATV TRAILS ARE NOT OPEN UNTIL MAY 15TH OR LATER DUE TO SPRING CONDITIONS AND LANDOWNER AGREEMENTS. PLEASE STAY OFF THE TRAILS UNTIL THEY ARE POSTED OPEN. THIS MINIMIZES DAMAGE TO THE TRAILS AND HELPS THE ATV CLUBS MINIMIZE MAINTENANCE COSTS. PLEASE FOLLOW TRAIL OPENING AND CLOSURE DATES AND WATCH FOR TRAIL CLOSURE SIGNS POSTED. GET UPDATED INFORMATION ON A SPECIFIC TRAILS BY CONTACTING YOUR LOCAL ATV CLUBS. For updated trail conditions go onto MNDNR website <http://www.dnr.state.mn.us/ohv/closures.html> and/or contact the local ATV Club for further trail information.

#### Alborn - Pengilly Railroad ATV Trail

**Range Riders ATV Club**  
Lou Benepé 218-885-1333  
Trail Miles: 32 (9 miles managed by Range Riders)  
(7 miles are in Itasca, 32 in St. Louis)

Open to:   
Opens: April 1st  
Closes: November 30th  
Difficulty Level: Easiest

#### Alvwood - Squaw Lake ATV/OHM Trail

**Alvwood Squaw Lake ATV Club**  
Garrett Ous: 218-340-7775  
Trail Miles: 159

Open to:   
Opens: May 2nd  
Closes: March 15th  
Difficulty Level: Easiest

#### B & B Connection ATV/OHM Trail

**Wilderness Wheelers ATV Club**  
<https://www.wildernesswheelers.com/>  
Ron Danielson: 218-259-5938  
Trail Miles: 33

Open to:   
Opens: May 15th  
Close: November 1st  
Difficulty Level: Easiest to Moderate

#### Balsam ATV/OHM Trail

**Balsam Trailblazers ATV Club**  
Lee Ford: [leefordupnorth@gmail.com](mailto:leefordupnorth@gmail.com)  
Trail Miles: 9

Open to:   
Opens: May 15th  
Closes November 1st  
Difficulty Level: Easiest

#### Blue Ox Trail

**4 sections maintained by:**

1. DNR Parks and Trails - Bemidji  
Area Supervisor: David Schotzko: 218-308-2367
2. Northhome Ridge Runners ATV Club  
Jack White: 218-897-5764
3. DNR Parks and Trails - Grand Rapids  
Area Supervisor: 218-328-8984
4. DNR Parks and Trails - Tower  
Area Supervisor: Joe Majerus: 218-300-7841

Trail Miles: 74  
(23 miles in Beltrami, 11 miles in Itasca, and 40 miles in Koochiching Counties)

Open to: and portions to   
Opens: April 1st  
Closes November 30th  
Difficulty Level: Easiest

#### Island Lake Connection Trail

**Northhome Ridge Runners ATV Club**  
<https://www.northhomeridgerunners.com/>  
Jack White: 218-897-5764  
Trail Miles: 2

Open to:   
Opens: May 2nd  
Closes: December 1st  
Difficulty Level: Easiest

#### Len Hardy Memorial ATV Trail

**Range Riders ATV Club**  
Lee Ford: [leefordupnorth@gmail.com](mailto:leefordupnorth@gmail.com)  
Lou Benepé 218-885-1333  
Trail Miles: 9

Open to:   
Opens: May 15th (2024)  
Closes November 1st  
Difficulty Level: Easiest

#### Little Moose ATV/OHM Trail

**Balsam Trailblazers ATV Club**  
Lee Ford: [leefordupnorth@gmail.com](mailto:leefordupnorth@gmail.com)  
Trail Miles: 18

Open to:   
Opens: May 15th  
Closes November 1st  
Difficulty Level: Easiest

#### Northwoods Regional ATV/OHM Trail System:

##### Goodland ATV/OHM Trail

##### Itasca Trail Riders ATV Club

Jon Korpi: 218-969-4297

Trail Miles: 19

Open to:   
Opens: May 15th  
Closes November 1st  
Difficulty Level: Easiest

#### UPM - Blandin ATV/OHM Trail

##### Rapids Riders ATV Club

<http://www.ratv.org/>  
Jerry McKnight: 218-259-6115  
Trail Miles: 21

Open to:   
Opens: May 15th  
Closes November 1st  
Difficulty Level: Easiest

#### Thistledew ATV Trail

##### MN DNR Parks and Trails Office

<https://www.dnr.state.mn.us/ohv/index.html>  
Area Supervisor:  
218-328-8984  
Trail Miles: 25 (Shared with horses)

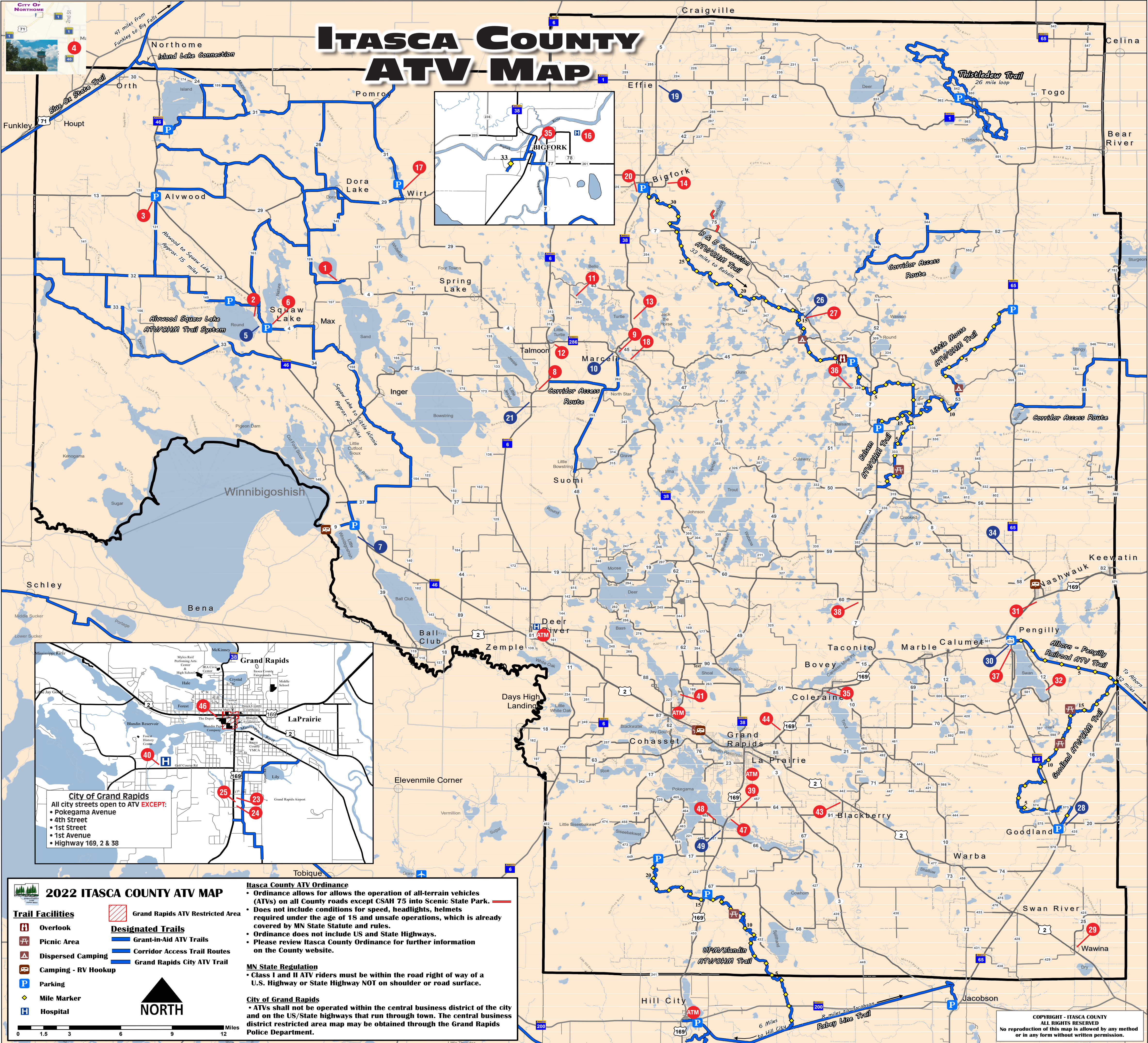
Open to:   
Opens: April 1st  
Closes November 30th  
Difficulty Level: Easiest

#### Wilderness ATV/OHM Trail

##### Wilderness Wheelers ATV Club

<http://www.wildernesswheels.com/>  
Ron Danielson: 28-259-5938  
Trail Miles: 30 currently open

Open to:   
Opens: May 15th  
Closes November 1st  
Difficulty Level: Easiest



- 1 Anchor Inn Resort
- 2 Leino's Riverside Pub
- 3 Hoot 'N Holler
- 4 Northome Municipal
- 5 Max Mini Store
- 6 Fish Tales Bar & Grill
- 7 Winnie Trading Post

- 8 Riley's Cannibal Junction
- 9 Lakeside Lumber
- 10 Frontier Sports
- 11 Arcadia Lodge
- 12 Hayslips Corner
- 13 Timberwolf Inn
- 14 Golf On the Edge

- 15 North Itasca Electric
- 16 Bigfork Valley Hospital
- 17 Sure Game Wilderness Resot
- 18 Owen's Place RV Park
- 19 Effie Country Store
- 20 Kocian's Family Market
- 21 Bowstring Store

- 22 Wilderness Wheelers
- 23 TimberLake Lodge
- 24 Americinn
- 25 IM Hotel
- 26 Antler Lake Store & Motel
- 27 Antler Lodge
- 28 Fred's

- 29 Swan River Red Eye
- 30 Swan Lake Marathon
- 31 Wizards
- 32 MJ's Lodge & Resort
- 33 Loon Point Resort
- 34 K-M Corner Store
- 35 The Locker Room

- 36 Northwoods Excavating
- 37 The Great Outdoors Bottle Shop
- 38 Lawrence Lake Liquor
- 39 Ray's Sport & Cycle
- 40 Grand Itasca
- 41 Wildwood Resort
- 42 Woodland Bank

- 43 Midway Repair
- 44 Roth RV
- 45 Edina Realty - Kathy Tadych
- 46 Grand Rapids Area Chamber of Commerce
- 47 The Pickled Loon
- 48 Zorbaz
- 49 Pokegama Lake Store